



Level One Electric Vehicle Charging Station  
**FREE STANDING**  
Product Guide

Model # SC2-120



Shorepower Technologies  
2351 NW York St.  
Portland, OR 98664  
503-892-7345  
[info@Shorepower.com](mailto:info@Shorepower.com)  
[www.Shorepower.com](http://www.Shorepower.com)



## **⚠ DANGER**



**Hazardous voltage.  
Can cause severe injury  
or death.**

Turn off main power  
before opening  
panel.

## **⚠ WARNING**

**Turn off or disconnect the power supplying this equipment before beginning work.**

This may require that you contact your electric utility to disconnect power to an existing load-center. The line side of the main breaker is energized unless power is disconnected upstream. ShorePower Technologies will not assume responsibility for property damage or personal injury resulting from misuse of the information in this publication

## **⚠ WARNING**

**ShorePower Technologies strongly recommends that these products be installed by a qualified electrical professional**

### **IMPORTANT – INSTALL EQUIPMENT IN CONFORMANCE WITH CODES**

This product must be installed in accordance with the National Electrical Code (NEC) or the Canadian Electrical Code (CEC) and any applicable local codes. Before installing equipment, check with your local electrical inspector for requirements and information. If you have questions or need assistance, contact a qualified electrical contractor.

## Table of Contents

1. Warnings	P.2
2. Installation & Mounting	P.4
3. Use	P.9
4. Maintenance & Cleaning	P.10
5. Troubleshooting	P.11
6. Features & Specifications	P.12
7. Accessories	P.13
8. Warranty	P.14
9. Other Shorepower Products	P.15

# Installation & Mounting

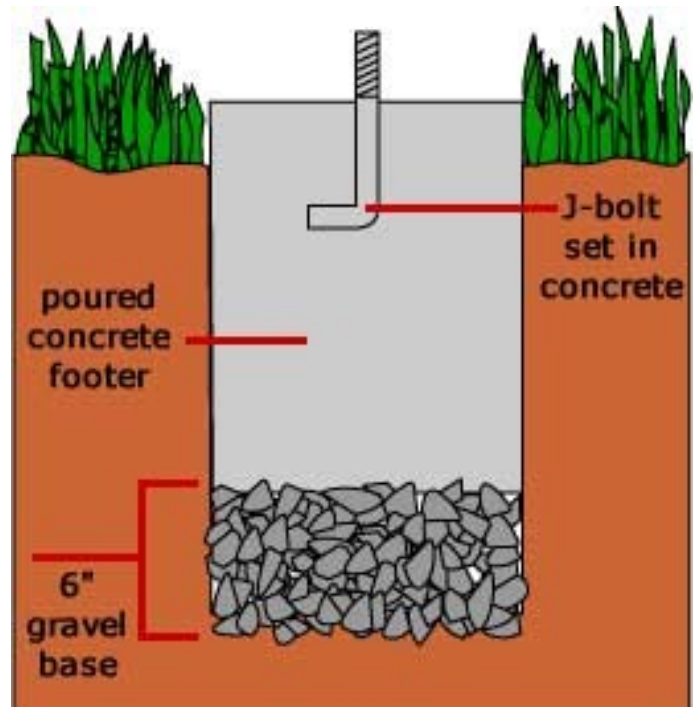
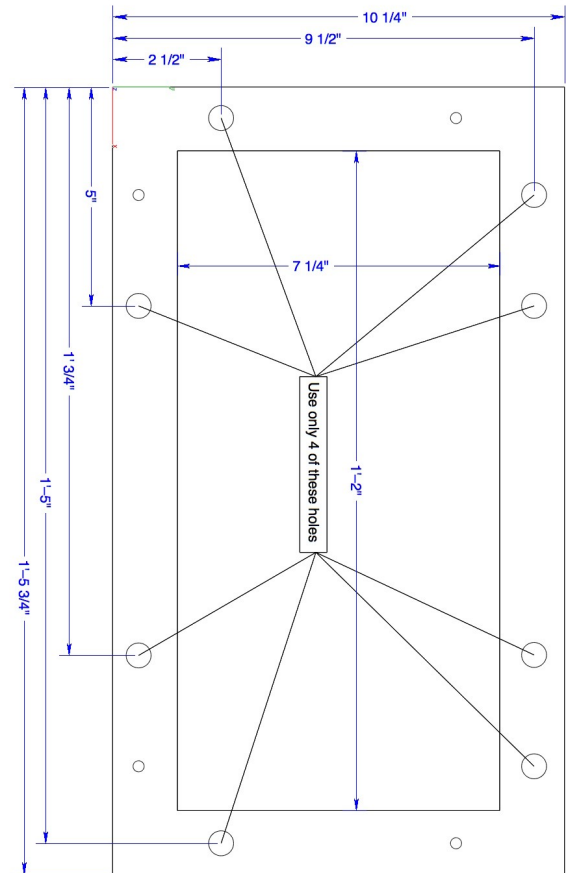
## 1. Prepare Concrete Pad.

*If the pad has already been poured:*

- Drill appropriate sized holes for concrete anchor Studs
- Set Anchor studs (See Diagram for Bolt Pattern)

*If Concrete Pad has not already been poured:*

- See recommended footer layout in diagram 2
- Set J bolts in displayed bolt pattern.

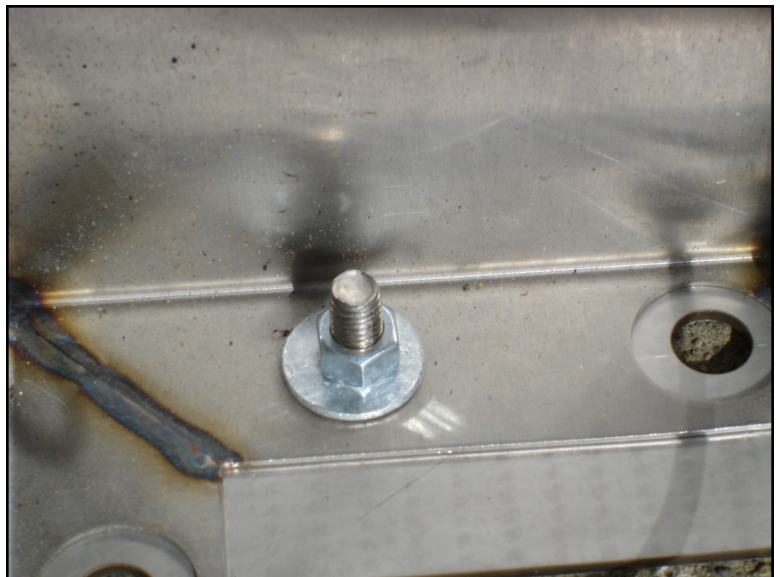




2. **Install Base Plate.** Place the base plate over the new anchor studs or J bolt studs in the concrete pad. Fasten the included washers and nuts and torque to the recommended torque specification.



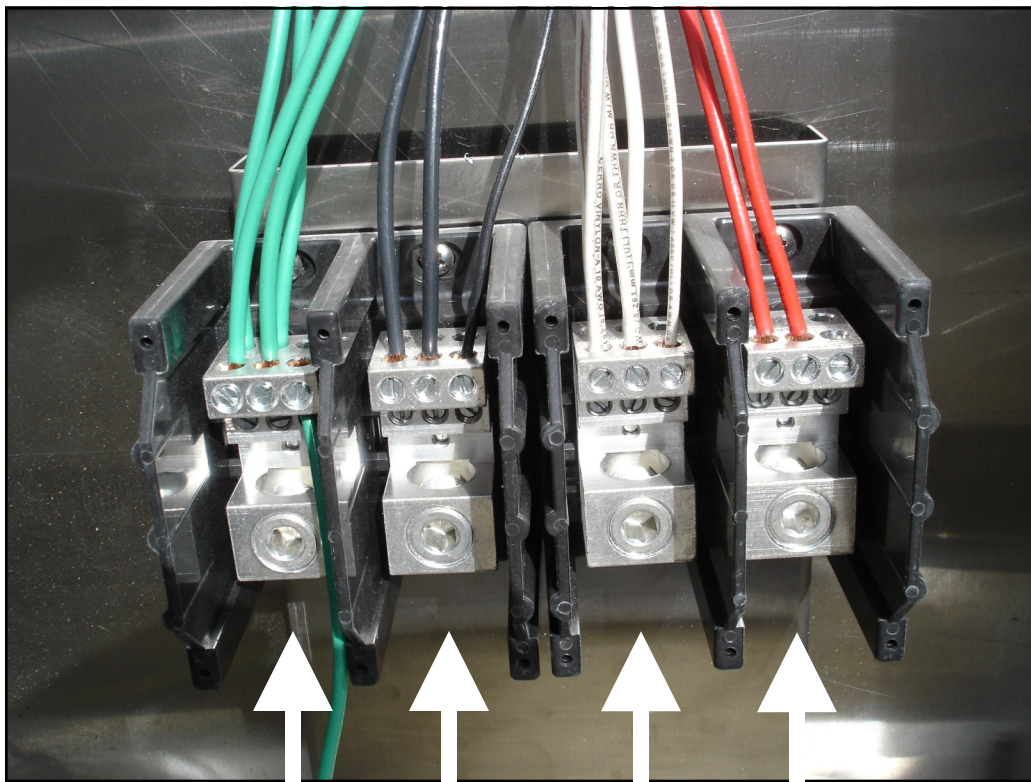
3. **Mount the Charging Station to the Base Plate.** Carefully lower the charging station over the Base Plate mounting studs. From within the station, fasten the four included flat washers and nuts to the Base Plate Studs



**4. Attach incoming line power to distribution blocks.**

Feed power lines through base Plate into distribution blocks. Tighten Allen head set screws to recommended torque specifications.

(Use appropriate sized conductors for minimum rating of 50 amps, 100 amp conductors recommended for level 2 charging)

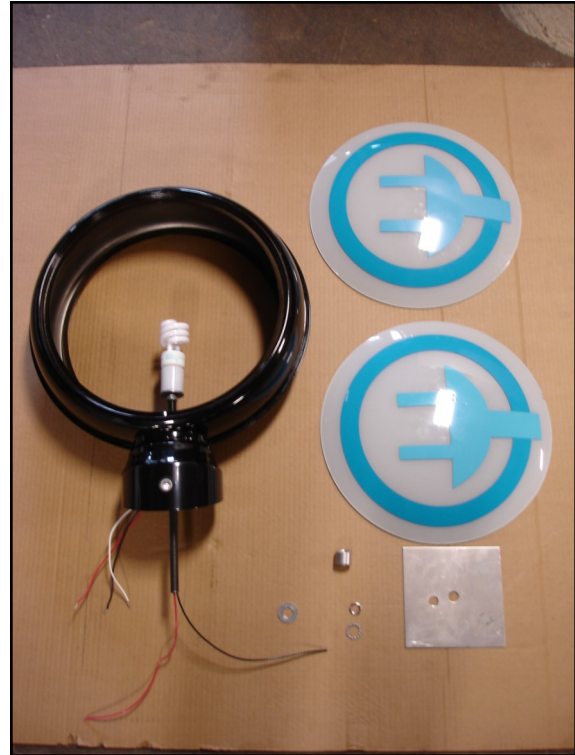


G—L1—N—L2



## 9. Optional Globe Installation.

- a. Unpack globe assembly.
- b. Install globe lenses. Lay globe assembly on a flat surface.
- c. Gently lay the lens into globe paying attention to alignment
- d. Insert the lock ring into the globe. Place the open ends of the ring toward the bottom and insert the ring into top half of globe. Press ring down and in around globe circumferences until ends meet. Ring should snap into place, locking lens in position.
- e. Gently flip Globe over and repeat steps c. & d. for the second lens.



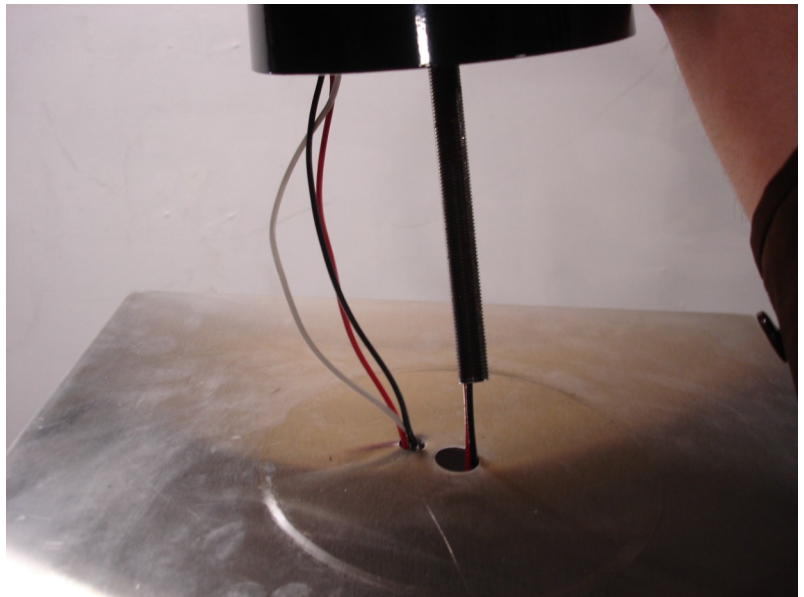
f. Insert the globe assembly into the charging station, first feeding the wires through the holes on the top of the station. Then, guiding the threaded rod through the center hole.

g. Fasten the included hardware from inside the station in this order:

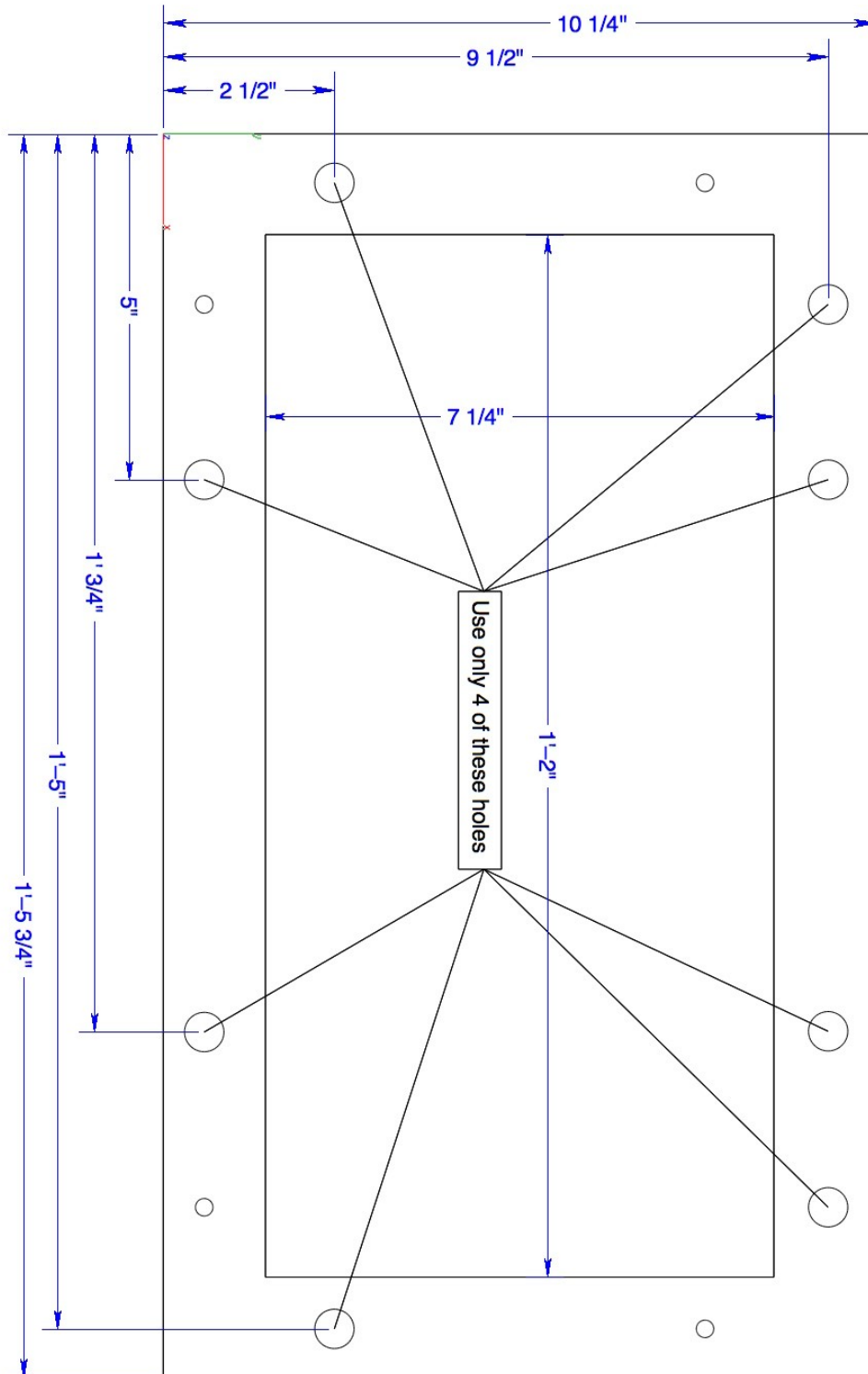
- a. Angle adapter (the aluminum cylinder with the angle cut on one side)
- b. Lock washer
- c. Nut

Connect the three wires to the wire nutted extension within the charging station

*Switch on lighting circuit breaker to test lighting fixtures. Light should remain on for 30-60 seconds in lighted areas. In dark areas, fixtures should stay lit indefinitely.*





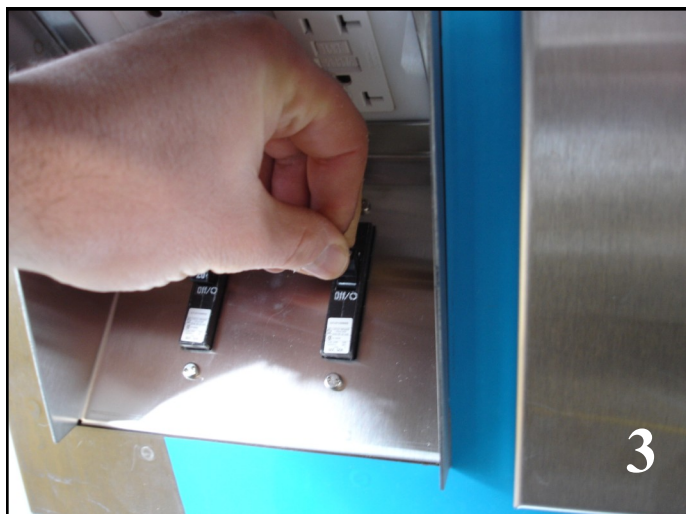


# Use

Shorepower Level 1 Charging Stations work like any standard 120 volt outlet with one exception. We recommend that the circuit breaker for the specific outlet you intend to use, be shut off prior to plugging in. Once plugged in, you can then switch the circuit breaker back on and commence charging.

1. Switch Circuit Breaker to the "Off" Position
2. Plug extension cord into Charging Station Outlet
3. Switch Circuit Breaker to the "On" Position

Reverse the process for disconnecting from charging station.



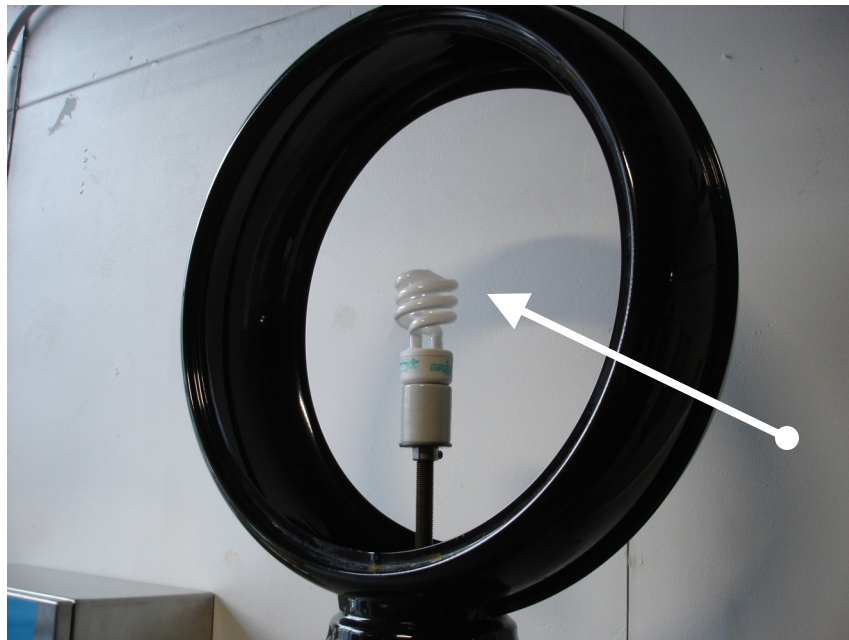
# Maintenance & Cleaning

Regular maintenance is not generally required on Shorepower Charging Stations. However you may find the need to replace the illumination bulb within the Unit. To do so, follow these simple steps:

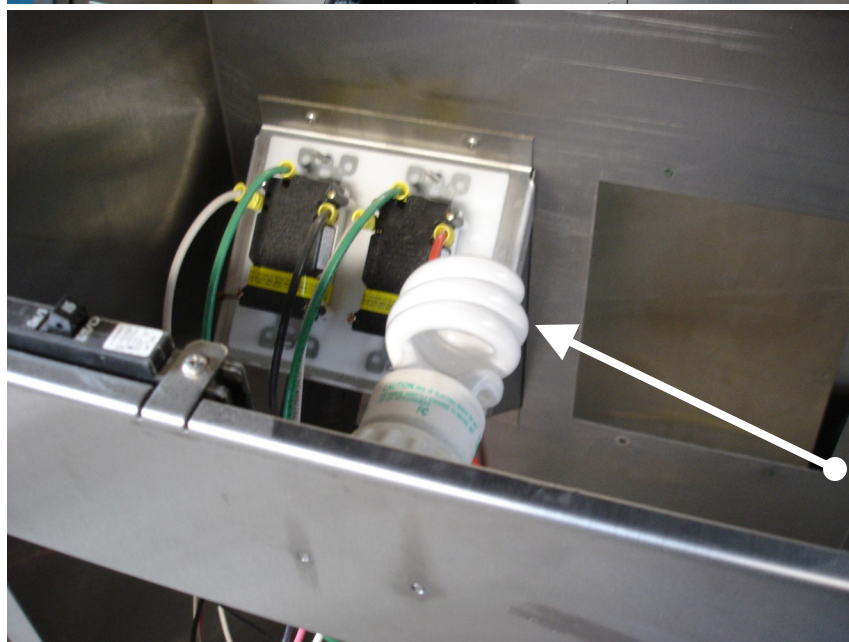
1. Shut off main power service to Charging Station
2. Open Station Access Panel by removing the security screws from the back of the station.
3. Grasp Bulb with soft cloth and turning counter clockwise until the bulb becomes free
4. Replace bulb with same compact fluorescent or equivalent incandescent
5. The bulb in the globe and also be changed by removing either of the glass domes . (see dome installation instructions)

## Cleaning:

- Use a soft damp cloth with a mild detergent to wipe exterior of unit with main power service off
- Standard Stainless Steel polish can be used on the exterior as needed



User  
Serviceable  
Light Bulb



User  
Serviceable  
Light Bulb



# Troubleshooting

## **Problem: Charging Station Does not Light Up**

1. Shut power to station off.
2. Open charging station by removing the security screws from the back of the station .
3. Verify that the lighting circuit breaker mounted on the back panel is switched to the on position.
4. Remove the light bulb and test it a known good standard light fixture such as a table lamp.
5. If the light still does not illuminate, replace the bulb.

## **Problem: Charging Station does not charge Vehicle (No Power Output)**

1. Verify all Circuit Breakers are in the on position.
2. Verify no circuit breakers have been tripped by switching them to the full off position then back to the on position.
3. Verify that the GFCI trip has not been set. Press the reset button and re-test.
4. If there is still no power, verify that the main power to the station is on.
5. **WARNING, SHOCK DANGER!** Open charging station door and measure voltages at L1 and L2 of the Charging stations main input buss. You should read 110v—120v between L1 and N and L2 and N. If no power is found, you have a main supply issue.

## **Problem: Circuit Breaker will not stay “On”**

1. If the circuit breaker will not stay in the on position, please disconnect any cords you may have connected and try and reset the breaker again.
2. If the problem no longer exists, check your cords and vehicle for short circuits and chargers that are pulling current than the breaker will allow.
3. If the problem still exists, replace the circuit breaker in question.

## Features & Specifications

Input Power	Recommended 240 Volt or 208 Volt, 100 amp (min. 50 amp) 4 Wire Circuit
Output Power	4 Level 1 GFCI 120 Volt 20 Amp Outlets (NEMA 5-20R) One Station Serves up to 4 Vehicles
Material	Stainless Steel
Outdoor Rating	NEMA
Dimensions	H20" x W16" x D9" Weight 40 Pnds apx.
Visibility	Backlit Outlets and Shorepower Logo for Nighttime Visibility
Upgradability	Fully Upgradable to future Level 2, SAE J1772 Stan- dards, with corded Connector
Warranty	Full 10 Year Warranty against Defects in workman- ship and materials. (Excluding Outlets)
Safety	Hi Visibility Ground Fault Circuit Interrupt equipped Outlets

## Accessories

### Payment and Monitoring Control System



**Shorepower Accessory payment and monitoring control system allows owners to:**

- Optionally charge customers for use of the charging station
- Switch Power ports on and off via our web interface
- Meter power usage per individual power outlet and access Statistical data via our web interface

Call Shorepower Technologies for Pricing and detailed information 503-892-7345



# Warranty

## **Limited Warranty**

Shorepower Technologies warrants its factory-installed wall mount charging station, free standing charging station, and TSE Pedestals to be free from failure due to defects in material and workmanship under normal care and proper usage in a residential installation which fully complies with all National Electrical Code requirements for a period of 1 years from the date of installation.

In the event the product fails to comply with this warranty, Shorepower Technologies will, at its option, either repair or replace the product at without charge. To obtain warranty service the purchaser should return the product to the place of purchase or deliver the product prepaid to Shorepower Technologies at the address set forth below. Proof of purchase in the form of a receipt or invoice, which is evidence that the unit is within the warranty period, must be presented to obtain warranty service.

## **Shorepower Charging Stations Additional Information**

These warranties do not cover failure or damage due to improper storage, installation, operation, maintenance, accident, misuse, abuse or negligence. These warranties do not cover reimbursement for labor, transportation, gaining access, removal, installation, temporary power, or any other expenses that may be incurred in connection with repair or replacement of the Shorepower Technologies products.

**The remedies as provided under these warranties are the exclusive remedy of the purchaser and the limit of the liability of Shorepower Technologies with respect to these products, whether in contract, in tort (including negligence or strict liability) or otherwise. Shorepower Technologies disclaims all other warranties, including without limitation any implied warranty of merchantability or of fitness for a particular purpose, and shall not be liable for any incidental or consequential damages.**

With respect to products purchased by consumers of the United States for personal use, the implied warranties, including but not limited to the warranties of merchantability and of fitness for a particular purpose, are not excluded but are limited to the duration of the warranty period. Some states do not allow the exclusion or limitation of incidental or consequential damages or implied warranties, so the above limitations or exclusions may not apply to you. This warranty gives you specific legal rights, and you may also have other rights which vary from state to state.

**All product warranties are rendered null and void if a breaker other than those specifically listed by UL for use in this type SC2-120 product is installed.**

SHOREPOWER TECHNOLOGIES  
WARRANTY DEPARTMENT  
2351 NW York St.  
Portland, OR 97210

## Other Shorepower Products



**Level 1 & 2 Wall Mount EV Charging Stations**



**Truck Stop Electrification Pedestals**

## Addendum

If you purchasing a globe kit after purchasing the standard station you will need to move the light sensor into the globe adapter.

### Light Sensor install

1. Remove light sensor from station by unscrewing the three wire nuts and the plastic nut on top of the station
2. Place the included spacer onto the sensor head
3. Insert the light sensor into the globe adapter so that the wires extend sideways
4. Place the rubber washer over the sensor head and install the plastic nut and tighten

